



**COMPANY PROFILE 2025**



# ZEMEN BANK HQ BUILDING

Addis Ababa, Ethiopia



# CONTENTS

<b>04</b>	Company Overview	<b>09</b>	Executive & Management Team	<b>14</b>	JDAW Architects & Engineers
<b>05</b>	Company Milestones	<b>10</b>	Staff Distribution Across Dept	<b>40</b>	JDAW Pile Foundation Specialist
<b>06</b>	Geographical Span of Our Projects	<b>11</b>	Vision, Mission & Values	<b>46</b>	JDAW Concrete Batching Plant
<b>07</b>	Statement from the CEO	<b>12</b>	Certifications	<b>49</b>	JDAW Stone Crusher
<b>08</b>	JDAW Holdings Organogram	<b>13</b>	Award & Partnerships		

# JDAW HOLDINGS



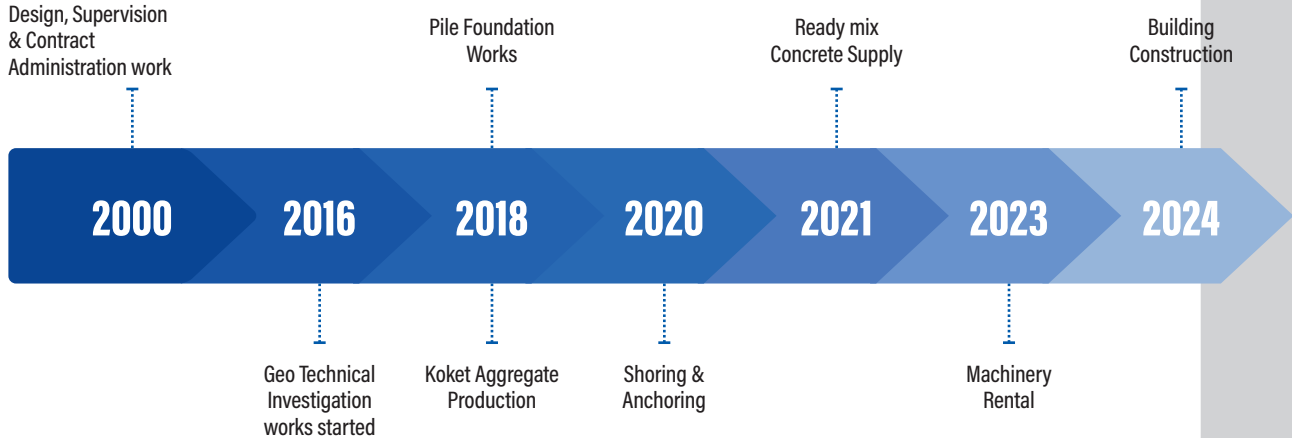
JDAW Holdings is a leading multidisciplinary firm specializing in a range of services within the construction industry. Since 2000, we have been dedicated to delivering exceptional consulting, architectural, and engineering solutions for residential and commercial projects.

Renowned for our commitment to quality, safety, and sustainability, we excel in custom home construction, commercial developments, road infrastructure, and manufacturing. Our state-of-the-art equipment and experienced technical experts enable us to provide comprehensive services from the initial stages to project completion, consistently delivering innovative solutions that set us apart in the industry.

Our divisions include:

- 1. Architectural and Engineering Consulting:** Providing innovative and tailored solutions to meet the diverse needs of private and commercial clients.
- 2. Concrete Ready-Mix Supplies:** Supplying high-quality concrete for governmental, non-governmental, and private sector projects.
- 3. Pile Foundation Specialists:** Expert services in shoring and pile foundations for high-rise buildings, ensuring structural integrity and safety.
- 4. Aggregate Supply:** Offering top-grade aggregate materials to support various construction needs.
- 5. Geo-technical Investigations:** Conducting thorough site investigations to inform and optimize construction projects.
- 6. General Construction:** Managing a wide range of construction projects from custom homes to commercial developments and infrastructure.
- 7. Real Estate Development and Manufacturing:** Developing innovative real estate solutions and manufacturing high-quality construction materials.

# COMPANY MILESTONES



# Geographical Span of Our Projects

(Active in five continents)

## USA

AbdlghanePartnership  
with Parkens Eastman

## Poland

Design Competition  
for Gorzów City  
Urban Planning

## UAE

Partnership With  
Dimensions Architect  
Hesham Abdlghane

## Cameron

Private Residence  
Building

## Uganda

5 Star Hotel, Golf club Apartment  
Designproposal at Entebbe vectorial lake

## Ethiopia

Company Home country  
Architecture, Construction, Foundation & Soil works,  
Aggregate & Ready-mix concrete supply

## Australia

Partnership With LAVA  
(Laboratory for Visionary Architecture)

## Somali Land

President Palace,  
Residence, Mosque,  
Military Camp & Guest house



**DANIEL ASSEFA WOLDESEMAYAT**  
Founder and CEO of JDAW HOLDINGS

## Statement from the CEO

Since its founding in 2000, JDAW Holdings has been at the forefront of providing tailored solutions to meet our clients' diverse needs, leveraging our extensive knowledge, experience, and high-quality products and services.

In today's rapidly evolving world, the continuity of our business is never guaranteed. To thrive, we must have a clear and forward-looking vision, allowing us to anticipate and respond to new challenges and opportunities. Adapting to the dynamic nature of our industry is essential for our continued success.

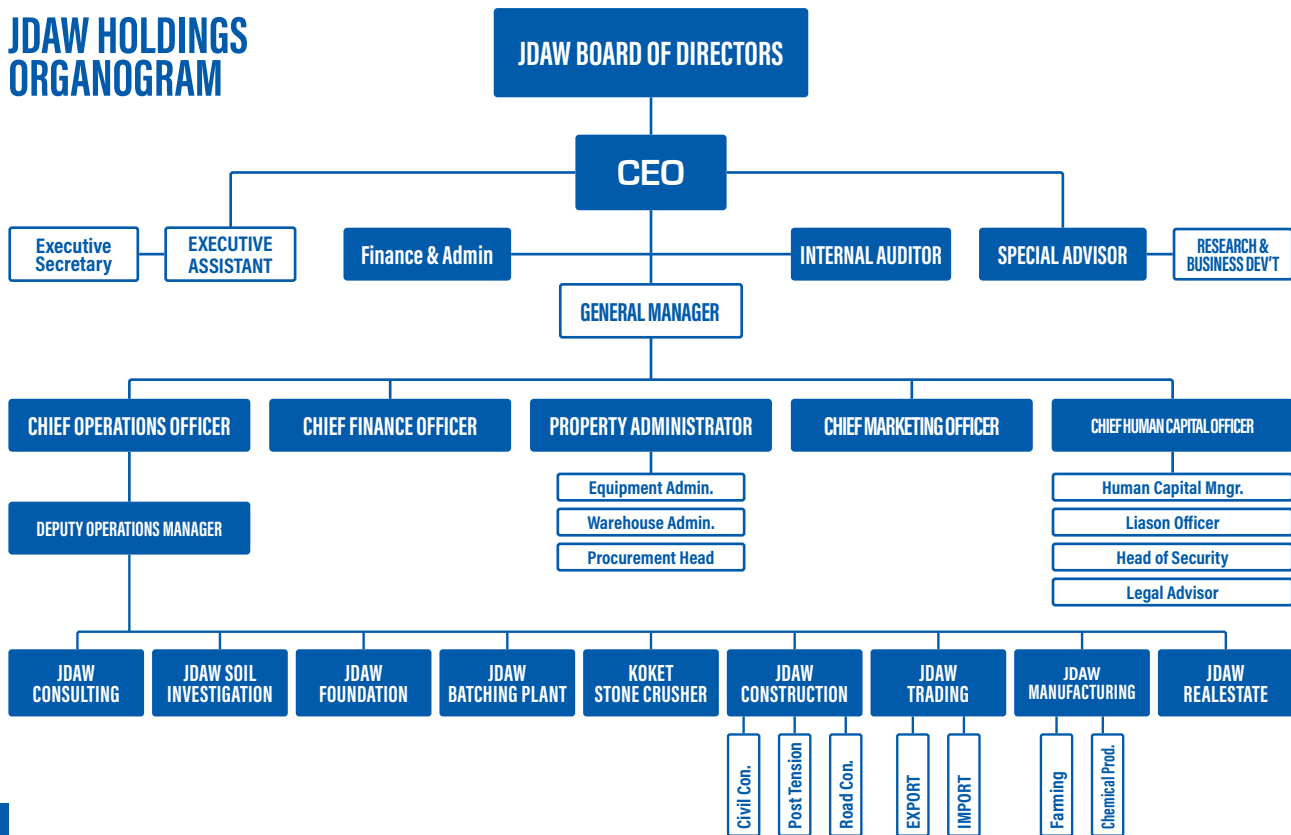
Our achievements are driven by our dedicated management team, whose creativity, innovation, and energetic approach contribute significantly to our value proposition. We are committed to conducting our business with the highest ethical standards and transparency, always aiming to deliver products that offer exceptional value in terms of both price and quality.

Our success is measured by our financial performance, our adaptability, and our reputation, which is ultimately determined by the satisfaction of our clients, our community, and our country.

Equipped with state-of-the-art technology and supported by an incredibly strong and motivated team, I am immensely proud to lead JDAW Holdings. This team is the cornerstone of our success.

I owe all my successes and accomplishments to God, who has been my strength.

# JDAW HOLDINGS ORGANOGRAM





## EXECUTIVE TEAM



**DANIEL ASSEFA**  
FOUNDER & CEO of JD&W



**DR. ABDUL KHALIL**  
MANAGING DIRECTOR



**GULMA KEBEDE**  
SENIOR ADVISOR



**ADIYAM ATSIBHA**  
PROPERTY ADMIN



**TESFAYE MEKONNEN**  
GENERAL MANAGER



**DESTA ALEMU**  
CHIEF FINANCE OFFICER



**MUBAREK NUR**  
CHIEF HR OFFICER

## MANAGEMENT TEAM



**BINIYAM ASSEFA**  
SHORING MANAGER



**HABTAMU HOSISO**  
DESIGN & SUPERVISION MNGR



**ANANIYA ASSEFA**  
RMC PRODUCTION MNGR



**KASSU H/MARIAM**  
KOKET PROJECT COORDINATOR



**SERKALEM HAILU**  
INTERNAL AUDITOR



**ASRAT GIRMA**  
MAINTAINANCE MANAGER



**DANIEL WONDOSEN**  
MATERIAL SUPPLY MANAGER



**GETNET AREGA**  
MARKETING MANAGER



**WUBLIKER SENESHAW**  
CONSTRUCTION MNGR.



**YARED TADESSE**  
EQUIPMENT ADMIN



**MESFIN KEBEDE**  
PROJECT COORDINATOR



**ASCHALEW DEJENE**  
PROCUREMENT HEAD

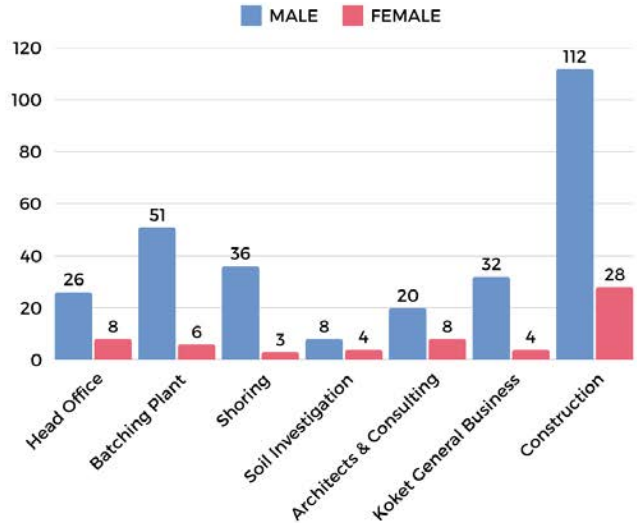
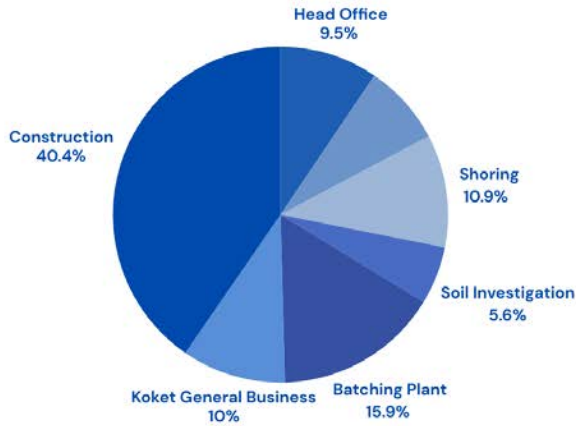


**FITSUM GEBRU**  
SOIL INVESTIGATION HEAD



**TINSAE TIZAZU**  
CONSTRUCT ADMIN HEAD

# Staff Distribution Across Companies



# VISION



To be the global benchmark in delivering innovative design and consultancy services across all our multidisciplinary divisions, consistently preferred by clients for our commitment to quality, safety, and sustainability in the construction industry.

# MISSION



Establish, implement and maintain a formal quality management system according to international standards.

Focus on customer satisfaction.

Maintain high caliber professionals, avail appropriate working facilities, necessary materials and adequate fund.

Apply State-of the-Art technology & the right marketing strategies to undertake environment friendly operations.

# VALUES



- J Ethical operations: Maintaining business operations which are in compliance to the principles of business ethics.
- J Human development: Establishing and maintaining a situation in which employees can grow in their career and also economically.
- J Environment consciousness: Ensuring that the company's business processes, inputs and outputs are environment friendly.
- J Customer satisfaction: Making 'Customer Satisfaction' one of the company's key success indicators.
- J Professional outputs: Running internal and external business processes in such a way that the work outputs are in compliance with the professional requirements of the fields of Architecture and Engineering.
- J National and International growth: Contributing to the growth and development of the countries where the company supplies its service packages.
- J Continuity: Ensuring that the above-mentioned values are maintained permanently and in compliance to the principle of 'The Going Concern'.

# Certifications



Ethiopia Conformity Assessment  
Enterprise

## Membership Certificates:

Association of Ethiopian Architects



Association of Ethiopian Architect



Ethiopian Consulting Engineers and  
Architects Association



Addis Ababa Chamber of commerce  
and sectoral associations

## Certificates: International and regional



Commercial Bank of Ethiopia



NIB Insurance Company and  
NIB International Bank



Sunshine Investment PLC



Ethiopia Graduate  
School of Theology



Belayab Enterprise



Addis Ababa Housing Construction Office

# International Partnerships & Awards

From its humble beginning to present, JDAW Consulting Architects and Engineers continues to evolve and adapt to the never-ending changes in the global environment. Exploring new frontiers in design and technology and setting new standards for the future.

Today, JDAW Consulting Architects and Engineers has a position as one of Ethiopia's most recognized and high ranked architecture practices. It is remarkable when one considers the breadth and depth of what it has accomplished in the last 17 years.



Zemen Bank 1st Prize Award



NIB Bank 3rd Prize



National Stadium 1st Prize



BIM project execution partner.



Post Tension systems partner



Agile ESG Consultants LLC  
Shaping a sustainable future

LEED certification partner

## International Consulting Architectural Firm Partners



Perkins Eastman



**DIMENSIONS™**  
ARCHITECT HESHAM ABDIGHANE

Dimensions Architect Hesham Abdighane



Hamilton Project Management

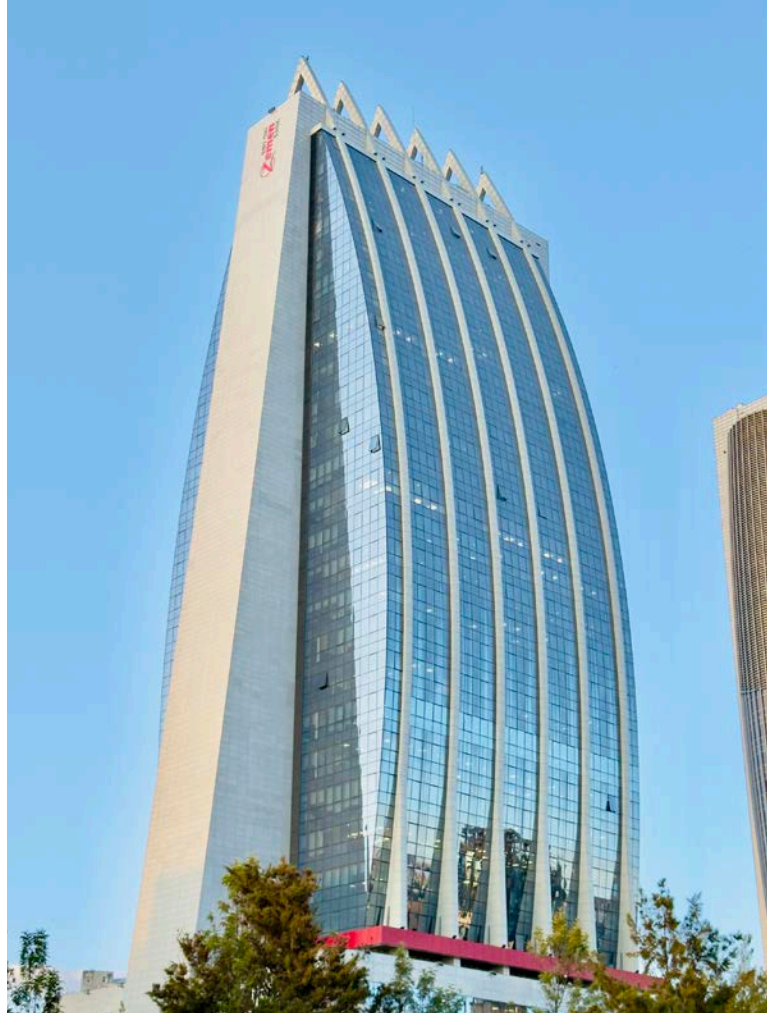


LAVA Laboratory for Visionary Architecture



## Consulting Architects & Engineers

JDAW Consulting Architects and Engineers PLC is a multi-disciplinary company of consultants providing professional services in a wide range of civil engineering works. It provides professional services to government, non-government and private-sector customers. The firm was established in April 2000 and has grown to be a successful engineering company. It is now one of the highly reputable consulting firms in the fields of Architecture and Engineering. In the beginning, JDAW had been oriented only towards architectural works. However, as the vision of the firm expanded and the capabilities of its associate staff grew, the company's activities have widened to all the principal sectors of architectural and engineering works. JDAW is registered at Addis Ababa City Administration Infrastructure and Construction Authority as CATEGORY ONE (CAT I) CONSULTANT and is licensed to carry out consultancy services in the fields of Architecture and Engineering.







# National Stadium & Sport Village



Joint Venture:

**LAVA**  
Laboratory for Visionary Architecture

NATIONAL STADIUM AND SPORTS VILLAGE, ADDIS ABABA ETHIOPIA - NEW CITY PRECINCT



**60,000 Seats, Project Value of \$200 Million**





# Birhan Bank HQ Competition Entry

**4B+G+52**

**Project Value :  
\$280 Million**

**2nd Prize  
Winner**





# Global Bank HQ Competition Entry

**4B+G+45**

**Project Value:  
\$250 Million**

**1st Prize  
Winner**







# Beraki Apartments

**5B +G+23**

**Project Value:**

**\$75 Million**





# Awash Insurance HQ Competition Entry

**4B +G+30**

**Project Value:  
\$90 Million**

**2nd Prize  
Winner**









**Oromia Bank Training & Convention Center**







**Republic of Somali-land Palace**















**Apartment & Mall Juba, South Sudan**



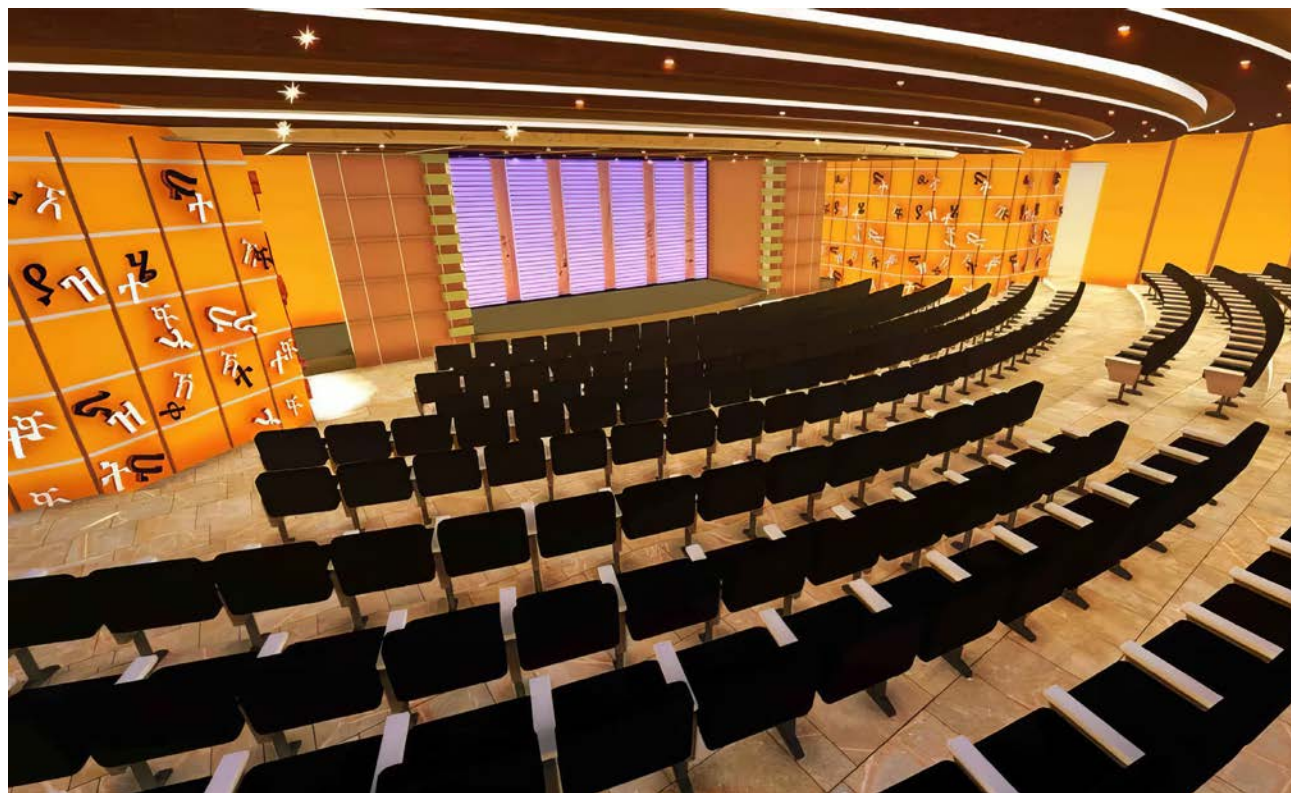
**Apartment and mall -- Juba, South Sudan**







**National Theater, Competition 2nd Prize**











**JDAW Pile Foundation Specialist**





## Machinery & Equipments



**ZR 220 C-3 PILE DRILLING RIG**



**ZR 220 C-3 PILE DRILLING RIG**



**C6-XP2 ANCHOR DRILLING RIG**



**BERETTA T155 ANCHOR DRILLING RIG**



**High pressure cement grouting pump**



**SPZ-9D Shot-crete machine**



6B+G+28 Building of Yekatit Paper Converting Plc



Gerji Totot, ECWC Construction Site



JDAW dump truck fleet



2X Self-loading car mixer 3.5m<sup>3</sup>



Atlas Copco XAS1600  
Compressor



Atlas Copco XAMS850  
Compressor



Miller Big Blue 500k  
Welding Generator



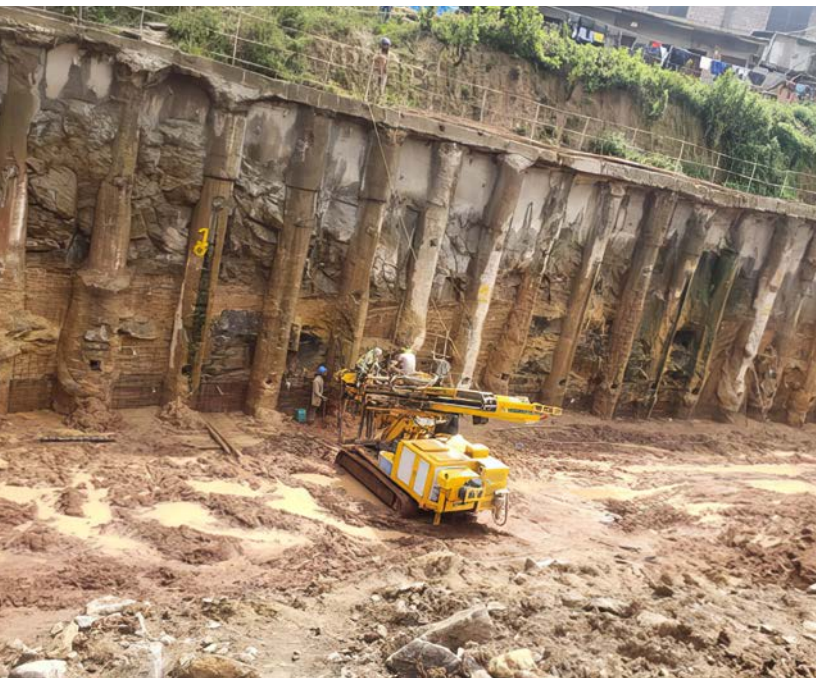




4B+G+ 14 Building of Noah (Sheger) site



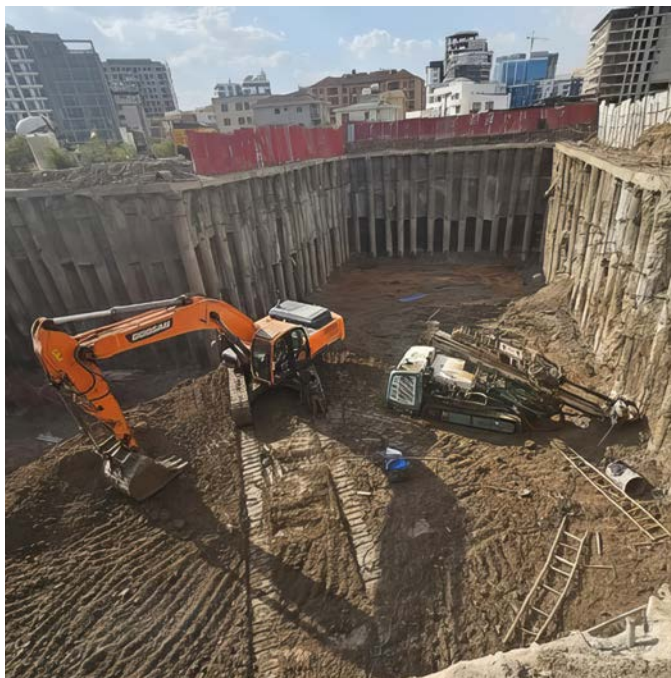




**Completed 5B+G+ 20 Building of Century Real Estate**



**Excavation protection work, Beraki Apartments. Bole near Burundi Embassy**



5B+G+23 Building of Beraki Ethiopia Group Real Estate Plc







Shoring Pile Drilling and Concrete Casting of Noah Real Estate (6B+G+20 Apartment Building)



JDAW Soil Investigation  
& Geo-informatics



## **JDAW Concrete Batching Plant**

**Zoomlion, Japan**  
**120 m<sup>3</sup> /hr**  
**1000m<sup>3</sup> Capacity /day**







Truck mounted 63m pump (elephant Pump) & stationary pump for high rising structures.

Fully automated & state of the art equipment  
 Brand new batching plant & new truck mixer  
 Excellence through Quality & service  
 Customer support before & after concrete delivery  
 C5 up to C60 proven quality achievements

- Scope of service
- > C-50-60 Quality strength
  - > High strength concrete
  - > High density concrete
  - > Light weight concrete
  - > Rapid set concrete
  - > Air entrained concrete
  - > Lean concrete





JDAW Concrete batching Plant Truck mixer fleet







JDAW Stone Crusher





**JDAW Stone Crusher**





ጄ.ዳው አማካሪ አርክቴክቶችና መሐንዲሶች  
**JDAW CONSULTING ARCHITECTS AND ENGINEERS**

Wollo Sefer, Ethio-China Street Mina Building 8<sup>th</sup> Floor  
**251 911 21 52 20 . 251 903 833 333**  
[jdawconsulting@gmail.com](mailto:jdawconsulting@gmail.com) | [www.jdawconsult.com](http://www.jdawconsult.com)

Addis Ababa, Ethiopia